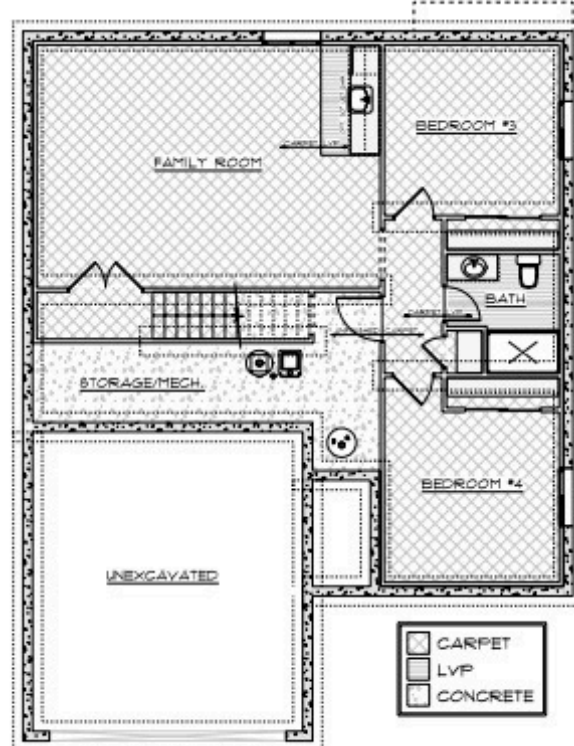
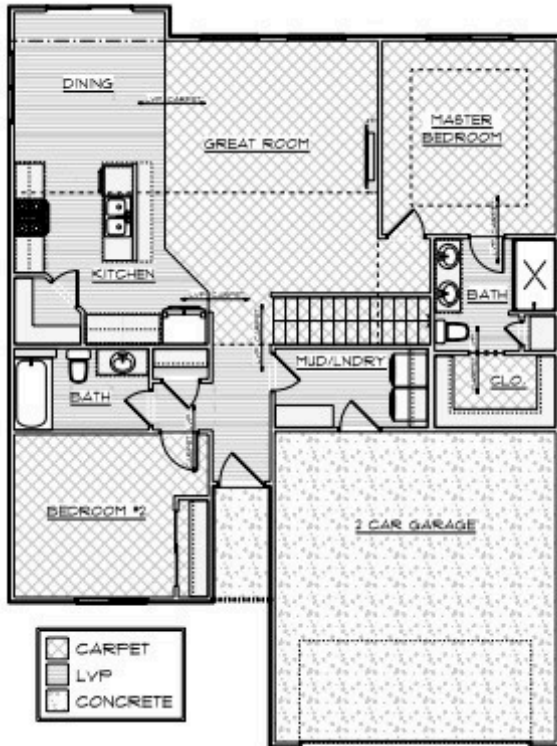




TRUST BUILDERS

# The Auburn Ranch

Optional Upgrade: Basement Finish | 922 Sq Ft Living Space | 2 Bed | 1 Bath | Optional Wet Bar



Ranch



1239 SQ FT



2 Bed



2 Bath

Trust Builders' Auburn Ranch offers an open floor plan with an easy to maintain layout. Enjoy 2 baths and 2 bedrooms on the main level plus a 2 car garage. Optional future basement finish makes this home a perfect fit for many homeowners. Reach out to Trust Builders to discuss building this floor plan on your desired lot.

Email: [sales@trustbuildersiowa.com](mailto:sales@trustbuildersiowa.com)