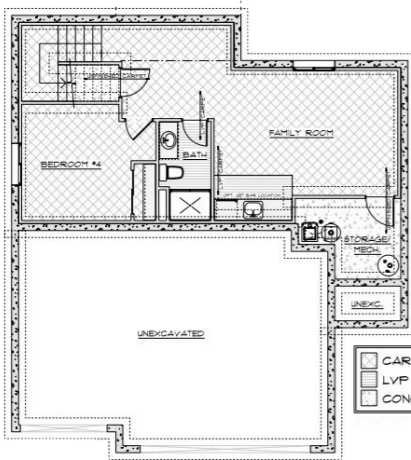


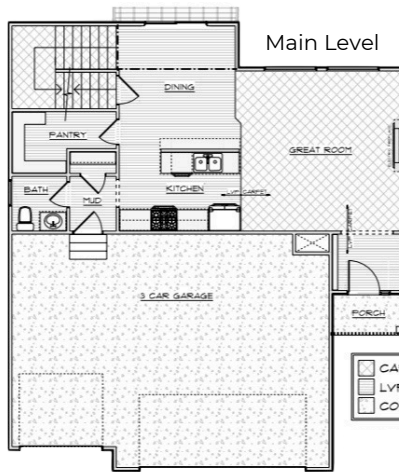


**TRUST**  
BUILDERS

# The Brayton 3

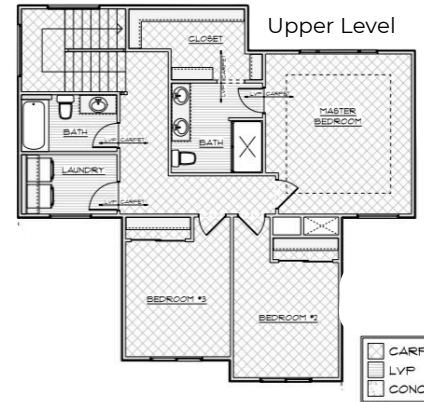


CARPET  
LVP  
CONCRETE



Main Level

CARPET  
LVP  
CONCRETE



Upper Level

CARPET  
LVP  
CONCR

Optional Upgrade: Basement Finish | 424 Sq Ft Living Space | 1 Bed | 1 Bath | Optional Wet Bar



2 Story



1734 SQ FT



4 Bed



2.5 Bath

Trust Builders' Brayton 3 Two-Story offers an open concept layout with spacious main living area, kitchen and sizable walk-in pantry. The floor plan provides 3 bedrooms, 2.5 bathrooms along with a beautiful turn back staircase at the back corner of the home.

Optional upgrades are available including a covered deck, finished basement and more.

Reach out to Trust Builders to discuss building this floor plan on your desired lot and to schedule your own tour.

**Email: [sales@trustbuildersiowa.com](mailto:sales@trustbuildersiowa.com)**