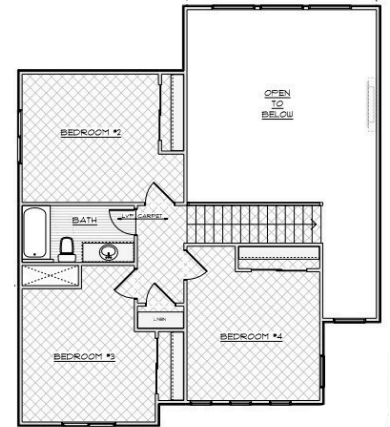
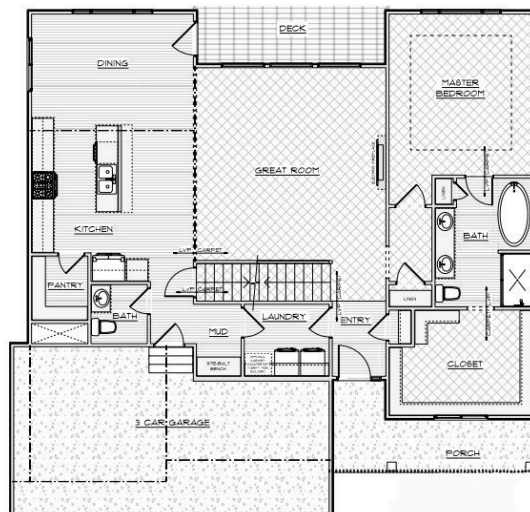
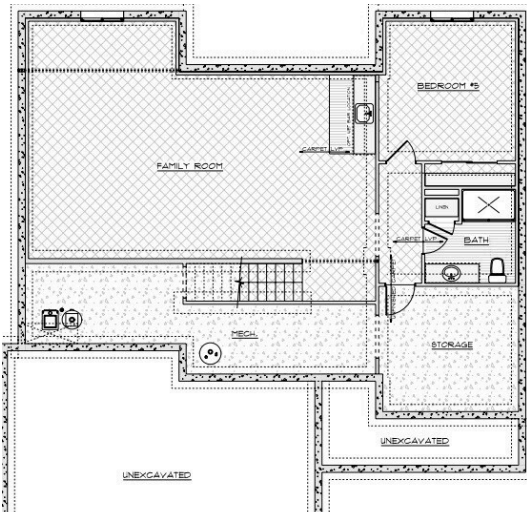


TB

TRUST BUILDERS

The Dawson 1.5-Story



Optional Upgrade: Basement Finish | 1012 SQ FT
Living Space | 2 Bed | 1 Bath | Optional Wet Bar



1.5 Story



2272 SQ FT



4 Bed



2.5 Bath

Trust Builders' Dawson 1.5-Story is one of our most popular plans. With a sprawling kitchen, dining and living space plus soaring living area ceilings, the layout of this home is anything but expected. A walk-in pantry, drop zone and a 3 car garage make the day to day easy. Enjoy this home long-term with the owner's suite on the main level and 3 additional bedrooms and one bathroom on the second level. Optional basement finish and a main level office are available along with several other features! Reach out to Trust Builders to discuss building this floor plan on your desired lot and to schedule your own tour.

Email: sales@trustbuildersiowa.com