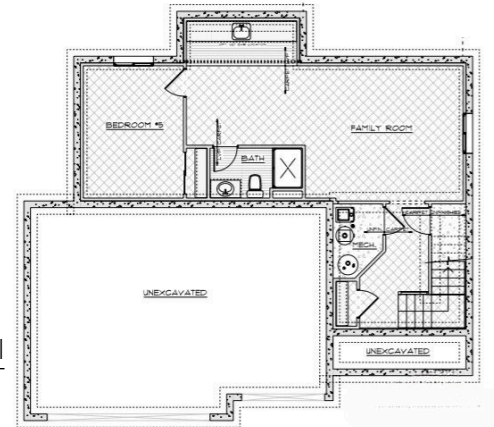
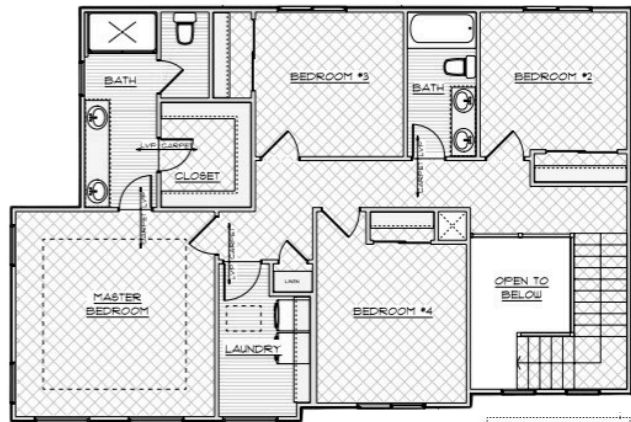








TRUST BUILDERS

# The Arcadia 2-Story



-  2 Story
-  2030 SQ FT
-  4 Bed
-  2.5 Bath

Optional Upgrade: Basement Finish | 615 SQ FT  
Living Space | 1 Bed | 1 Bath

Trust Builders' Arcadia Two-Story plan with 2030 square foot offers an open floor plan with large windows, walk-in pantry, drop zone and a private half bath on the main level. Beautiful turn-back stairs lead to the upper level featuring the owner's suite plus 3 secondary bedrooms and a large laundry room. Reach out to Trust Builders to discuss building this floor plan on your desired lot. Email: [sales@trustbuildersiowa.com](mailto:sales@trustbuildersiowa.com)