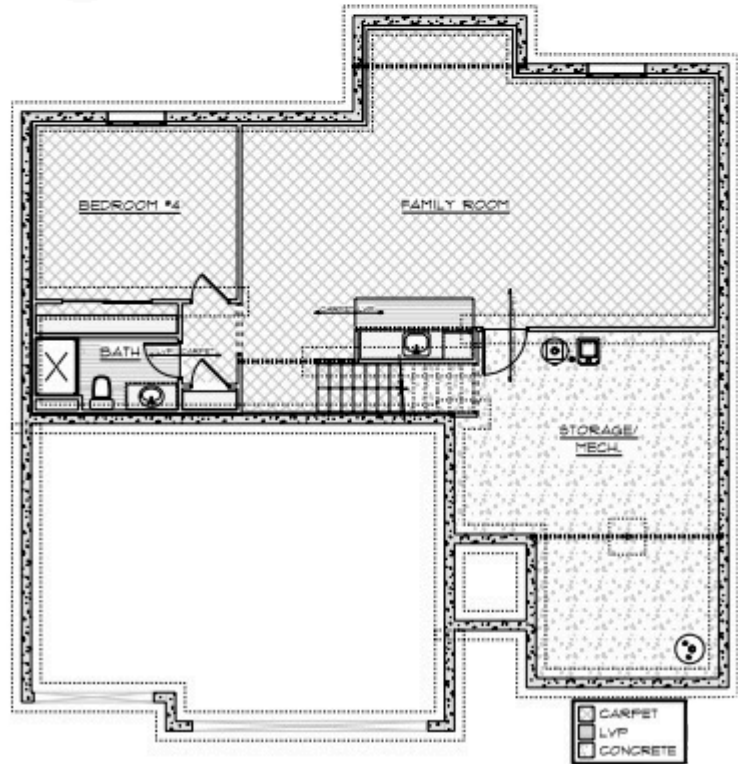




# TB

**TRUST**  
BUILDERS

# The Shelby Ranch



Optional Upgrade: Basement Finish | 962 Sq Ft Living Space | 1 Bed | 1 Bath



Ranch



1486 SQ FT



3 Bed



2 Bath

Trust Builders' Shelby Ranch offers 1486 Square Foot on the main level with an open concept layout, boasting a private and spacious owner's suite, large walk-in pantry, drop zone and ample natural light. Enjoy 3 bedrooms, 2 bathrooms and a 3 car garage along with excellent standard finishes.

Optional future basement finish along with several other upgrade options are available! Reach out to Trust Builders to discuss building this floor plan on your desired lot.

Email: [sales@trustbuildersiowa.com](mailto:sales@trustbuildersiowa.com)