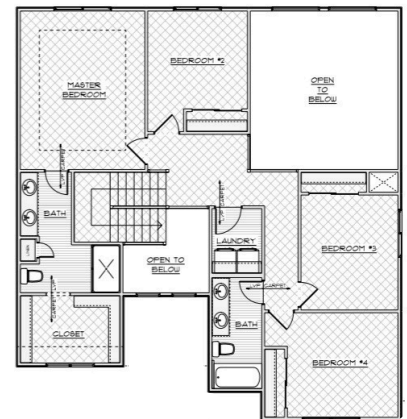
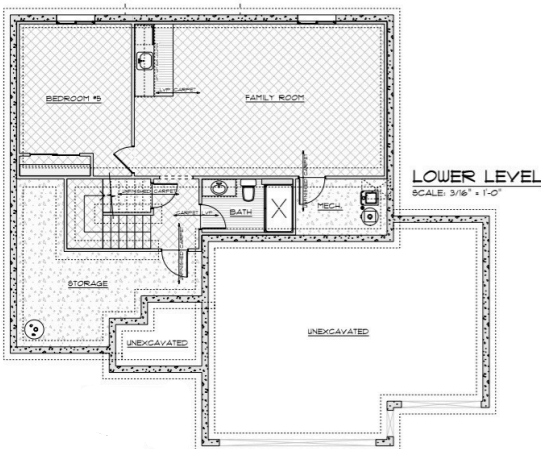




TRUST BUILDERS

The Rockford 2-Story



Optional Upgrade: Basement Finish | 710 SQ FT
Living Space | 1 Bed | 1 Bath |
Optional Wet Bar



2 Story



2335 SQ FT



4 Bed



2.5 Bath



Office on Main

Trust Builders' Rockford Two-Story boasts one of our most popular layouts with 4 Bedrooms, 2.5 Baths and soaring living area ceilings. The spacious layout with front office, large walk-in pantry, loads of natural light into the main living area and beautiful standard features make you feel right at home. The potential with this plan for additional lower level basement finish allows for plenty of space and flexible living with a 5th bedroom, additional living space, bath and optional wet bar. Reach out to Trust Builders to discuss building this floor plan on your desired lot.

Email: sales@trustbuildersiowa.com