

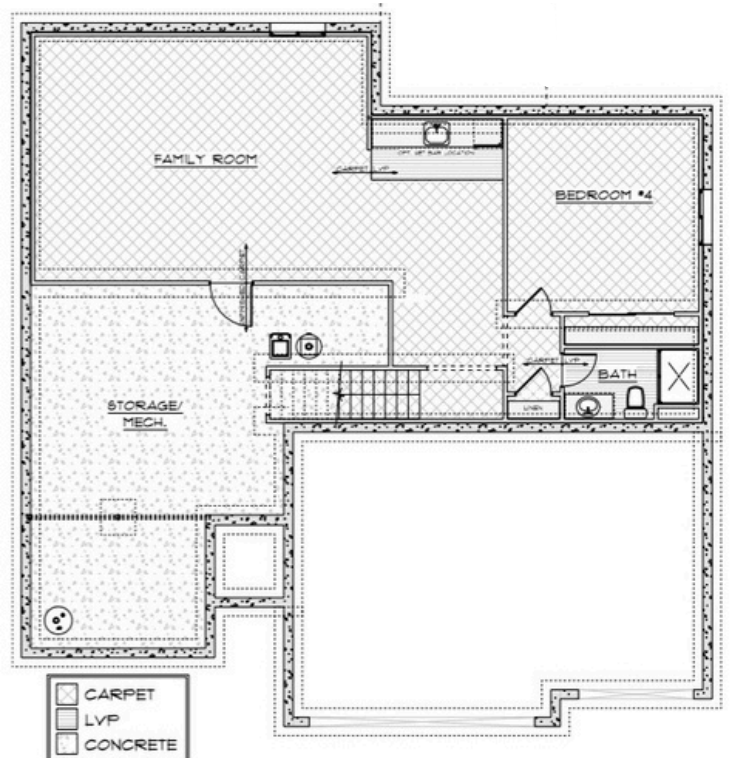
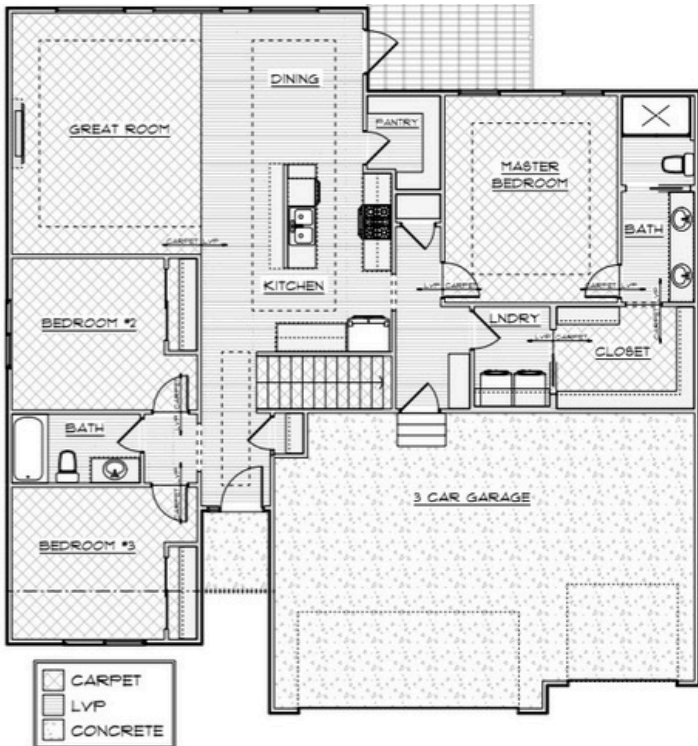


TB

TRUST
BUILDERS

The Sanborn Ranch

Optional Upgrade: Basement Finish | 976 Sq Ft
Living Space | 1 Bed | 1 Bath



Ranch



1600 SQ FT



3 Bed



2 Bath

Trust Builders' Sanborn Ranch offers a beautiful open concept floor plan with a private owner's suite, large walk-in pantry and ample natural light. The 1600 square foot main level of the home offers a total of 3 bedrooms, 2 baths and 3 car garage. Optional basement finish adds a spacious living area, bedroom and bathroom. Reach out to Trust Builders to discuss building this floor plan on your desired lot and to schedule your own tour.

Email: sales@trustbuildersiowa.com